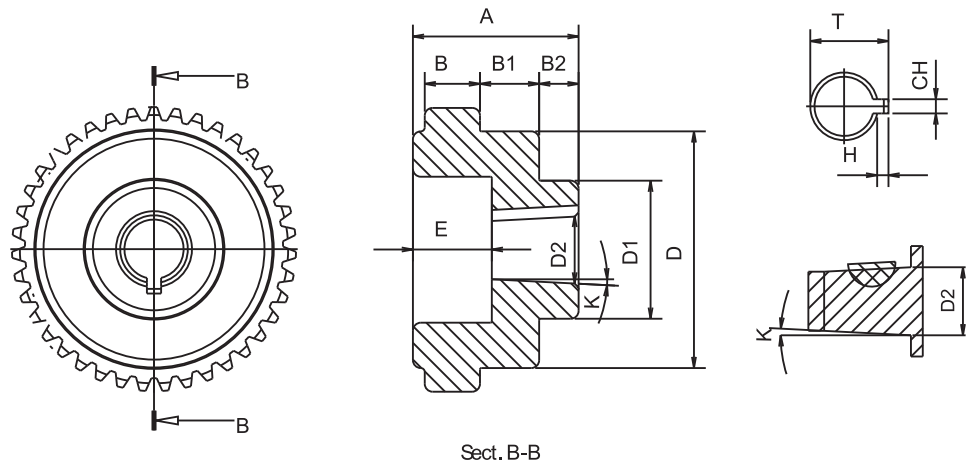


REFERENCE			MOTOR SIDE COUPLING GEAR							
KW.	HP	E.MOTOR	CODE	A	B	D	D2	CH	T	Z
2,2 / 4	3 / 5,5	132	DK3203	40 & 60	14	50				38
			DK321403				14	5	16,5	
			DK321903				19	6	22	
			DK322403				24	8	28	
			DK322803				28	8	32	
			DK323203				32	8	36	



PUMP SIDE COUPLING GEAR													
CODE	A	B	B1	B2	D	D1	D2	E	CH	T	H	K	Z
DK321P03	40	14	15,5	9,5	50	33	16,66	18	4	-	2	1/8	38
DK322PK03			-	-		-	22,15	-	3,7	-	1,85		
DK323PK03			-	-		-	22,2	-	4	-	2	1/8	
DK323PD-1-03			-	-		-	29,21	-	8	33,21	4	-	
DK323PD-2-03			-	-		-	25,40	-	6	28,40	3	-	
DK323PD-3-03			-	-		-	31,75	-	8	35,75	4	-	
DK322503			-	-		-	25	-	8	29	4	-	
DK32-G2B-03			-	-		-	12,5	-	3	-	1,5	1/5	
DK32-1M03			-	-		-	13,9	-	3	-	1,5	1/8	
DK32-G2-1403			-	-		-	14,3	-	3,2	-	1,6		
DK32-2-03			-	-		-	17,2	-	4	-	2	1/8	
DK32-2-03T			-	-		-	17,2	-	3,2	-	1,6		
DK32-G3-03			-	-		-	18,36	-	4	-	2	1/5	
DK32-G3B-03			-	-		-	19,3	-	5	-	2,5		
DK32-SAE-A-03			-	-		-	19,05	-	5	21,55	2,5	-	
DK32-G3,5-03			-	-		-	21,08	-	4,8	-	2,4	1/8	
DK32-ZG-03			-	-		-	25,2	-	5	-	2,5	1/5	
DK32-35-03T			-	-		-	25,6	-	4,76	-	2,4	1/8	
DK32-35-03			-	-		-	25,6	-	5	-	2,5		